

Pure Naturals



HORIZON ROOF TILE – SEASHELL | BACKGROUND PAINT ACCENT DULUX® CAT MINT

Modernist

REFINED & GROUNDED



BRADFORD™ VENTILATION
WINDMASTER™ ROOF VENT
COLORBOND® SURFMIST®



MONIER™ ROOFING
CONCRETE HORIZON
ROOF TILE - SEASHELL



PGH STONE
RUGGED LEDGESTONE
- SILVER PEAK



HEBEL POWERPANEL^{XL}
CLADDING BAGGED SURFACE
IN DULUX® TUFT



PGH BRICKS
ELEMENTS - JAROSITE

TO LEARN MORE VISIT [DWELLING.CSR.COM.AU/STYLES](https://dwelling.csr.com.au/styles) PRODUCT IMAGES HAVE BEEN REPRODUCED AS ACCURATELY AS POSSIBLE BUT PLEASE CHECK CHOSEN PRODUCTS/COLOURS AGAINST ACTUAL SAMPLES BEFORE PURCHASING. PLEASE NOTE THAT DUE TO THE MANUFACTURING PROCESS AND RAW MATERIALS USED, PRODUCTS CAN VARY FROM SAMPLES REGARDING COLOUR, TEXTURE AND SURFACE FINISH. RENDERED HEBEL PRODUCTS USE DULUX® ACRATEX® COATING SYSTEM, CEMINTEL PAINTED PRODUCTS USE DULUX® WEATHERSHIELD® COATING SYSTEM.



BUILD YOUR HOME IN

Pure Naturals

NSW



SCHEME 1

ROOF MONIER™ CONCRETE
ELABANA – SALT SPRAY

VENTILATION BRADFORD™
WINDMASTER™
COLORBOND® SURFMIST®

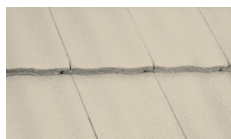
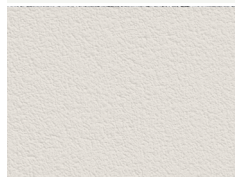
GUTTER COLORBOND®
SURFMIST®

FASCIA COLORBOND®
DOVER WHITE™

PRIMARY CLADDING
HEBEL POWERPANEL^{XL}
IN DULUX® SANDY DAY
QUARTER

FEATURE CLADDING
PGH BRICKS
FOUNDATIONS – SILICA

FEATURE PRODUCT
PGH STONE RUDD
LEDGESTONE –
WHITEHAVEN



SCHEME 2

ROOF MONIER™ CONCRETE
ATURA – WILD RICE

VENTILATION BRADFORD™
SUPAVENT™ COLORBOND®
SURFMIST®

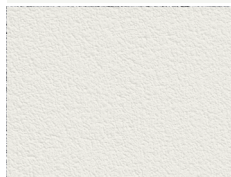
GUTTER COLORBOND®
SURFMIST®

FASCIA COLORBOND®
DOVER WHITE™

PRIMARY CLADDING
HEBEL POWERPANEL^{XL}
IN DULUX® SNOWY
MOUNTAINS QUARTER

FEATURE CLADDING
PGH BRICKS VELOUR –
PEARL GREY

FEATURE PRODUCT
PGH STONE NATURAL
FIELDSTONE – ALPINE GREY



SCHEME 3

ROOF MONIER CONCRETE
HORIZON – SEASHELL

VENTILATION BRADFORD
AIROMATIC® COLORBOND®
SURFMIST®

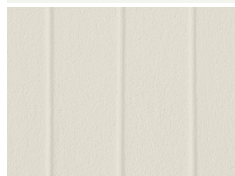
GUTTER COLORBOND®
SURFMIST®

FASCIA COLORBOND®
DOVER WHITE™

PRIMARY CLADDING
HEBEL POWERPATTERN
TRACK® 100MM IN DULUX®
CHINA WHITE

FEATURE CLADDING
PGH BRICKS MORADA –
ARES

FEATURE PRODUCT
PGH STONE NATURAL
FIELDSTONE – RUSSET



BUILD TIP

COMPLETE YOUR HOME

DON'T FORGET THE PRODUCTS THAT LIE IN THE HIDDEN LAYERS OF YOUR HOME ALSO CONTRIBUTE TO ITS PERFORMANCE.

THIS CSR MODERNIST HOME DESIGN USES BRADFORD ENVIROSEAL™ WALL WRAP, A VAPOUR PERMEABLE WALL WRAP WHICH IS IDEAL FOR USE IN BRICK VENEER AND LIGHTWEIGHT CLAD CONSTRUCTION TO REDUCE THE RISK OF CONDENSATION DAMAGE IN THE HOME.

SCAN THE QR CODE TO LEARN MORE

TO LEARN MORE VISIT [DWELLING.CSR.COM.AU/STYLES](https://dwelling.csr.com.au/styles) PRODUCT IMAGES HAVE BEEN REPRODUCED AS ACCURATELY AS POSSIBLE BUT PLEASE CHECK CHOSEN PRODUCTS/COLOURS AGAINST ACTUAL SAMPLES BEFORE PURCHASING. PLEASE NOTE THAT DUE TO THE MANUFACTURING PROCESS AND RAW MATERIALS USED, PRODUCTS CAN VARY FROM SAMPLES REGARDING COLOUR, TEXTURE AND SURFACE FINISH. RENDERED HEBEL PRODUCTS USE DULUX® ACRATEX® COATING SYSTEM, CEMINTEL PAINTED PRODUCTS USE DULUX® WEATHERSHIELD® COATING SYSTEM.



BUILD YOUR HOME IN

Pure Naturals

QLD

SCHEME 1

ROOF MONIER™ CONCRETE
ATURA – SEASHELL

VENTILATION BRADFORD™
WINDMASTER™
COLORBOND® SURFMIST®

GUTTER COLORBOND®
SURFMIST®

FASCIA COLORBOND®
DOVER WHITE™

PRIMARY CLADDING
HEBEL POWERPANEL^{XL}
IN DULUX® SNOWY
MOUNTAINS QUARTER

FEATURE CLADDING
PGH BRICKS HORIZON –
EMERALD

FEATURE PRODUCT
PGH STONE NATURAL
LEDGESTONE –
WHITEHAVEN

SCHEME 2

ROOF MONIER CONCRETE
ATURA – SALT SPRAY

VENTILATION BRADFORD
SUPAVENT™ COLORBOND®
SURFMIST®

GUTTER COLORBOND®
SURFMIST®

FASCIA COLORBOND®
DOVER WHITE™

PRIMARY CLADDING
HEBEL POWERPANEL^{XL}
IN DULUX® CHINA WHITE

FEATURE CLADDING
PGH BRICKS NATURALS –
MOON DUST

FEATURE PRODUCT
PGH STONE NATURAL
FIELDSTONE – ALPINE GREY

SCHEME 3

ROOF MONIER CONCRETE
HORIZON – SALT SPRAY

VENTILATION BRADFORD
AIROMATIC® COLORBOND®
SURFMIST®

GUTTER COLORBOND®
SURFMIST®

FASCIA COLORBOND®
DOVER WHITE™

PRIMARY CLADDING
HEBEL POWERPATTERN
TRACK® 100MM IN DULUX®
CHINA WHITE

FEATURE CLADDING
PGH BRICKS MORADA –
ARES

FEATURE PRODUCT
PGH STONE NATURAL
FIELDSTONE – RUSSET

COMPLETE YOUR HOME

DON'T FORGET THE
PRODUCTS THAT LIE IN THE
HIDDEN LAYERS OF YOUR
HOME ALSO CONTRIBUTE
TO ITS PERFORMANCE.

THIS CSR MODERNIST
HOME DESIGN USES
BRADFORD ENVIROSEAL™
WALL WRAP, A VAPOUR
PERMEABLE WALL WRAP
WHICH IS IDEAL FOR
USE IN BRICK VENEER
AND LIGHTWEIGHT CLAD
CONSTRUCTION TO
REDUCE THE RISK OF
CONDENSATION DAMAGE
IN THE HOME.

**SCAN THE QR CODE
TO LEARN MORE**

**BUILD
TIP**



TO LEARN MORE VISIT [DWELLING.CSR.COM.AU/STYLES](https://dwelling.csr.com.au/styles) PRODUCT IMAGES HAVE BEEN REPRODUCED AS ACCURATELY AS POSSIBLE BUT PLEASE CHECK CHOSEN PRODUCTS/COLOURS AGAINST ACTUAL SAMPLES BEFORE PURCHASING. PLEASE NOTE THAT DUE TO THE MANUFACTURING PROCESS AND RAW MATERIALS USED, PRODUCTS CAN VARY FROM SAMPLES REGARDING COLOUR, TEXTURE AND SURFACE FINISH. RENDERED HEBEL PRODUCTS USE DULUX® ACRATEX® COATING SYSTEM, CEMINTEL PAINTED PRODUCTS USE DULUX® WEATHERSHIELD® COATING SYSTEM.



Pure Naturals

SA



SCHEME 1

ROOF MONIER™ CONCRETE
ELABANA – SALT SPRAY

VENTILATION BRADFORD™
WINDMASTER™
COLORBOND® SURFMIST®

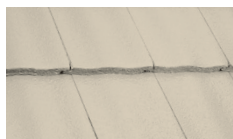
GUTTER COLORBOND®
SURFMIST®

FASCIA COLORBOND®
DOVER WHITE™

PRIMARY CLADDING
HEBEL POWERPANEL^{XL}
IN DULUX® SANDY DAY
QUARTER

FEATURE CLADDING
PGH BRICKS VELOUR –
CRUSHED GREY

FEATURE PRODUCT
PGH STONE RUDD
LEDGESTONE –
WHITEHAVEN



SCHEME 2

ROOF MONIER CONCRETE
ATURA – WILD RICE

VENTILATION BRADFORD
SUPAVENT™ COLORBOND®
SURFMIST®

GUTTER COLORBOND®
SURFMIST®

FASCIA COLORBOND®
DOVER WHITE™

PRIMARY CLADDING
HEBEL POWERPANEL^{XL}
IN DULUX® SNOWY
MOUNTAINS QUARTER

FEATURE CLADDING
PGH BRICKS
CONNOISSEUR – CHAI

FEATURE PRODUCT
PGH STONE NATURAL
FIELDSTONE – ALPINE GREY



SCHEME 3

ROOF MONIER CONCRETE
HORIZON – SALT SPRAY

VENTILATION BRADFORD
AIROMATIC® COLORBOND®
SURFMIST®

GUTTER COLORBOND®
SURFMIST®

FASCIA COLORBOND®
DOVER WHITE™

PRIMARY CLADDING
HEBEL POWERPATTERN
TRACK® 100MM IN DULUX®
CHINA WHITE

FEATURE CLADDING
PGH BRICKS
MORADA – ARES

FEATURE PRODUCT
PGH STONE NATURAL
FIELDSTONE – RUSSET

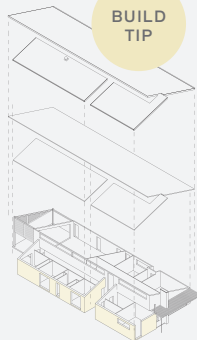


COMPLETE YOUR HOME

DON'T FORGET THE PRODUCTS THAT LIE IN THE HIDDEN LAYERS OF YOUR HOME ALSO CONTRIBUTE TO ITS PERFORMANCE.

THIS CSR MODERNIST HOME DESIGN USES BRADFORD ENVIROSEAL™ WALL WRAP, A VAPOUR PERMEABLE WALL WRAP WHICH IS IDEAL FOR USE IN BRICK VENEER AND LIGHTWEIGHT CLAD CONSTRUCTION TO REDUCE THE RISK OF CONDENSATION DAMAGE IN THE HOME.

SCAN THE QR CODE
TO LEARN MORE



BUILD TIP



TO LEARN MORE VISIT [DWELLING.CSR.COM.AU/STYLES](https://dwelling.csr.com.au/styles) PRODUCT IMAGES HAVE BEEN REPRODUCED AS ACCURATELY AS POSSIBLE BUT PLEASE CHECK CHOSEN PRODUCTS/COLOURS AGAINST ACTUAL SAMPLES BEFORE PURCHASING. PLEASE NOTE THAT DUE TO THE MANUFACTURING PROCESS AND RAW MATERIALS USED, PRODUCTS CAN VARY FROM SAMPLES REGARDING COLOUR, TEXTURE AND SURFACE FINISH. RENDERED HEBEL PRODUCTS USE DULUX® ACRATEX® COATING SYSTEM, CEMINTEL PAINTED PRODUCTS USE DULUX® WEATHERSHIELD® COATING SYSTEM.



BUILD YOUR HOME IN

Pure Naturals

VIC



SCHEME 1

ROOF MONIER™ CONCRETE
ELABANA – SALT SPRAY

VENTILATION BRADFORD™
WINDMASTER™
COLORBOND® SURFMIST®

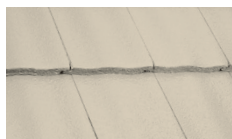
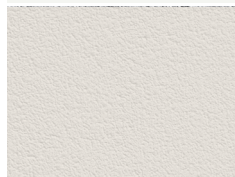
GUTTER COLORBOND®
SURFMIST®

FASCIA COLORBOND®
DOVER WHITE™

PRIMARY CLADDING
HEBEL POWERPANEL^{XL}
IN DULUX® SANDY DAY
QUARTER

FEATURE CLADDING
PGH BRICKS VELOUR –
CRUSHED GREY

FEATURE PRODUCT
PGH STONE RUCCO
LEDGESTONE –
WHITEHAVEN



SCHEME 2

ROOF MONIER CONCRETE
ATURA – WILD RICE

VENTILATION BRADFORD
SUPAVENT™ COLORBOND®
SURFMIST®

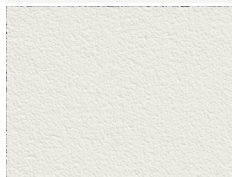
GUTTER COLORBOND®
SURFMIST®

FASCIA COLORBOND®
DOVER WHITE™

PRIMARY CLADDING
HEBEL POWERPANEL^{XL}
IN DULUX® SNOWY
MOUNTAINS QUARTER

FEATURE CLADDING
PGH BRICKS ESSENTIALS –
HEATHWOOD

FEATURE PRODUCT
PGH STONE NATURAL
FIELDSTONE – ALPINE GREY



SCHEME 3

ROOF MONIER CONCRETE
HORIZON – SALT SPRAY

VENTILATION BRADFORD
AIROMATIC® COLORBOND®
SURFMIST®

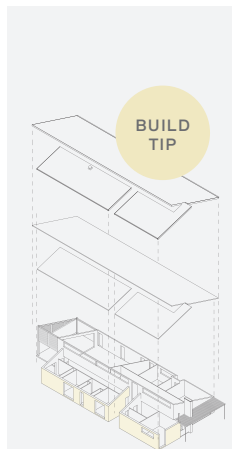
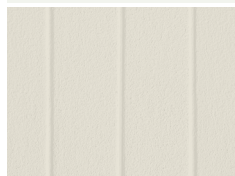
GUTTER COLORBOND®
SURFMIST®

FASCIA COLORBOND®
DOVER WHITE™

PRIMARY CLADDING
HEBEL POWERPATTERN
TRACK® 100MM IN DULUX®
CHINA WHITE

FEATURE CLADDING
PGH BRICKS MORADA –
ARES

FEATURE PRODUCT
PGH STONE NATURAL
FIELDSTONE – RUSSET



COMPLETE YOUR HOME

DON'T FORGET THE PRODUCTS THAT LIE IN THE HIDDEN LAYERS OF YOUR HOME ALSO CONTRIBUTE TO ITS PERFORMANCE.

THIS CSR MODERNIST HOME DESIGN USES BRADFORD ENVIROSEAL™ WALL WRAP, A VAPOUR PERMEABLE WALL WRAP WHICH IS IDEAL FOR USE IN BRICK VENEER AND LIGHTWEIGHT CLAD CONSTRUCTION TO REDUCE THE RISK OF CONDENSATION DAMAGE IN THE HOME.

SCAN THE QR CODE
TO LEARN MORE



TO LEARN MORE VISIT [DWELLING.CSR.COM.AU/STYLES](https://dwelling.csr.com.au/styles) PRODUCT IMAGES HAVE BEEN REPRODUCED AS ACCURATELY AS POSSIBLE BUT PLEASE CHECK CHOSEN PRODUCTS/COLOURS AGAINST ACTUAL SAMPLES BEFORE PURCHASING. PLEASE NOTE THAT DUE TO THE MANUFACTURING PROCESS AND RAW MATERIALS USED, PRODUCTS CAN VARY FROM SAMPLES REGARDING COLOUR, TEXTURE AND SURFACE FINISH. RENDERED HEBEL PRODUCTS USE DULUX® ACRATEX® COATING SYSTEM, CEMINTEL PAINTED PRODUCTS USE DULUX® WEATHERSHIELD® COATING SYSTEM.

